



## **SUPPLEMENTARY REGULATIONS**

**SEPTEMBER 12 - SEPTEMBER 13, 2025**

**2025 ARA WESTERN REGIONAL EVENT**

**&**

**California Rally Series (CRS) 2025 Championship**

*Friday Coefficient 2 Event*

*Saturday CRS Coefficient 3 Event*



## Table of Contents

|     |                           |    |
|-----|---------------------------|----|
| 1.  | Introduction              | 3  |
| 2.  | Organization              | 3  |
| 3.  | Schedule                  | 5  |
| 4.  | Entries                   | 6  |
| 5.  | Insurance                 | 8  |
| 6.  | Event Sponsor Advertising | 8  |
| 7.  | Fuel                      | 9  |
| 8.  | Reconnaissance            | 9  |
| 9.  | Check-In / Registration   | 10 |
| 10. | Scrutineering             | 10 |
| 11. | Service                   | 11 |
| 12. | Practice, Testing         | 12 |
| 13. | Features of the Rally     | 12 |
| 14. | Sanction Exemption (s)    | 13 |
|     | Appendix #1-Itinerary     |    |
|     | Appendix #2-Maps          |    |

# **1. Introduction**

## **1.1 Event Overview**

Prescott Rally will be held in Northern Arizona, in the cities of Chino Valley and Camp Verde. The 2025 Prescott Rally will be scored under the American Rally Association (ARA) Western Regional Championship and California Rally Series Championship. For CRS, each day will award championship points separately. Friday will be scored as a California Rally Series (CRS) Coefficient 2 event and Saturday as a CRS Coefficient 3 rally.

## **1.2 Operating Rules**

This event will be held under the current General Competition Rules, Rally Technical Rules, Rally Competition Rules, and Bulletins of the American Rally Association (ARA).

The 2025 American Rally Association Rules and Regulations can be found at <https://www.americanrallyassociation.org/rulesandbulletins>.

Modifications, amendments and / or changes to these Supplementary Regulations will be announced only by numbered and dated bulletins issued by either the Chairman or the Clerk of the Course.

## **1.3 Road Surface**

Road surface consists of a mixture of hard packed gravel and soft sand in areas. Stages are considered fast flowing passing through wide, sometimes narrow trails with cliffside exposure, sharp turns, and rough, rocky sections.

## **1.4 Rally Overall Distance**

The rally consists of 14 Super Stages totaling to 126 number of stage miles and 313 miles of transit over two days. Day one consists of 77 stage miles and 125 transit miles. Day two consists of 49 stage miles and 189 transit miles.

# **2. Organization**

## **2.1 Organizing Groups**

Prescott Rally is organized and conducted by Ringtail Rallysport, Inc. in conjunction with Arizona Rally Association and Rodnoc LLC. All groups involved have a passion to continue to grow the sport of rally in the southwest region of the US.

## 2.2 Organizing Committee

|                             |                |              |
|-----------------------------|----------------|--------------|
| Chairman                    | Riley Trout    | 928-925-0837 |
| Clerk of the Course         | Ryan Bakeman   | 661-733-9603 |
| Volunteer Coordinator       | TBD            |              |
| Chief of Scrutineering      | Kevin Mount    | 714-403-9735 |
| Chief of Emergency Services | Eric Wight     | 928-583-4312 |
| Chief of Communications     | Don Sears      | 928-277-7344 |
| Chief of Controls           | TBD            |              |
| Chief of Service            | Brian McNamara | 562-777-5057 |
| Net Control                 | Chris Spacone  | 310-408-1139 |

## 2.3 ARA Officials

|                               |                |  |
|-------------------------------|----------------|--|
| Series Manager                | Preston Osborn | <a href="mailto:preston@ara-rally.com">preston@ara-rally.com</a> |
| Competition Direction         | Liam O'Donnell | <a href="mailto:Lee@usacnation.com">Lee@usacnation.com</a>       |
| Technical Director            | Doug Nagy      | <a href="mailto:Doug@ara-rally.com">Doug@ara-rally.com</a>       |
| Event Steward                 | TBD            |  |
| ARA Registrar / Media Officer | Marni Nagy     | <a href="mailto:Marni@ara-rally.com">Marni@ara-rally.com</a>     |

For rules, licensing, or anything not listed above for ARA please visit  
[www.americanrallyassociation.org](http://www.americanrallyassociation.org).

## 2.4 Headquarters (HQ) location

Headquarters for the rally will be located at the Comfort Inn right off I-17. Please contact the hotel directly to book your rooms. Room blocks available from Thursday to Sunday mention "Prescott Rally" when booking. All administrative office type transactions will take place at the hotel's conference room

Comfort Inn Camp Verde I-17

340 N Goswick Way,

Camp Verde, AZ 86322

928-567-9000

## 2.5 Official Notice Board

An ONLINE official notice board will be utilized on the Sportity app/website, which is available for both apple and android devices. **NO PHYSICAL OFFICIAL NOTICE BOARD WILL BE AVAILABLE.**

All official documents, Bulletins, start orders, provisional results, inquiries, and responses will use the Sportity App/Website

The password for the event is **Prescott2025**

The notice board can be accessed on the web at <https://webapp.sportity.com/channel/Prescott2025>



### 3. Schedule

#### 3.1 Event Itinerary (All times are in Mountain Standard Time - MST)

*Monday August 4, 2025*

|             |       |                    |
|-------------|-------|--------------------|
| Entry Opens | 12:00 | www.EnterRally.com |
|-------------|-------|--------------------|

*Friday August 22, 2025*

|                   |       |                    |
|-------------------|-------|--------------------|
| Late Entry Starts | 23:59 | www.EnterRally.com |
|-------------------|-------|--------------------|

*Sunday September 7, 2025*

|   |       |                       |
|---|-------|-----------------------|
| Entry Closes                            | 23:59 | www.EnterRally.com    |
| Last Day to Request Larger Service Spot | 23:59 | Text Chief of Service |

*Monday September 8, 2025*

|                                      |       |                             |
|--------------------------------------|-------|-----------------------------|
| Entry List & Provisional Start Order | 20:00 | Sportity                    |
| Last Day to Register Crew & Media    | 22:00 | Registrar Folder - Sportity |

*Tuesday September 9, 2025*

|                 |       |                 |
|-----------------|-------|-----------------|
| Novice Briefing | 19:00 | Virtual Meeting |
| Media Briefing  | 19:00 | Virtual Meeting |

*Wednesday September 10, 2025*

|                     |               |                             |
|---------------------|---------------|-----------------------------|
| Competitor Check in | 19:00 – 21:00 | Comfort Inn – Camp Verde AZ |
|---------------------|---------------|-----------------------------|

*Thursday September 11, 2025*

|                             |               |                             |
|-----------------------------|---------------|-----------------------------|
| Competitor & Crew Check In  | 08:00 - 10:00 | Comfort Inn – Camp Verde AZ |
| Reconnaissance              | 09:30 - 17:30 | Prescott Rally Stages       |
| Crew and Media Check In     | 17:00 - 19:00 | Comfort Inn – Camp Verde AZ |
| Scrutineering               | 15:00 – 19:00 | TBD                         |
| Steward Meeting             | 20:30         | TBD                         |
| Official Start Order Posted | 21:30         | Sportity                    |

*Friday September 12, 2025*

|                              |               |   |
|------------------------------|---------------|---|
| Service Area Opens           | 07:00         | Camp Verde Equestrian Center –<br>Camp Verde AZ |
| Competitors to Parc Expose   | 08:15 – 08:40 | Camp Verde Town Park                            |
| Parc Expose                  | 09:00 – 10:00 | Camp Verde Town Park                            |
| Driver Safety Briefing       | 09:30         | Parc Expose                                     |
| Start of Leg 1               | 10:00         | Parc Expose                                     |
| End of Leg 1                 | ~ 21:22       | Camp Verde                                      |
| Parc Ferme                   | ~ 21:22       | Camp Verde                                      |
| Start Order for Leg 2 Posted | ~ 22:30       | Sportity  |

*Saturday September 13, 2025*

|                            |               |   |
|----------------------------|---------------|---|
| Service Area Opens         | 07:00         | Camp Verde Equestrian Center –<br>Camp Verde AZ |
| Competitors to Parc Expose | 07:50 – 08:20 | Camp Verde Town Park                            |
| Parc Expose                | 08:30 – 10:00 | Service Area                                    |
| Start of Leg 2             | 10:00         | Service Area                                    |
| End of Leg 2               | ~ 18:13       | Service Area                                    |
| Parc Ferme                 | ~ 18:13       | Service Area                                    |
| Provisional Results Posted | ~ 19:15       | Sportity  |
| Awards Ceremony            | ~ 19:30       | Service Area                                    |

## **4. Entries**

### **4.1 Entry Procedure**

Entry begins on August 1, 2025 at 12:00 and closes on September 7, 2025, at 23:59. **All** rally participants including competitors, crew members, media, and event officials, must first have an ARA License obtained from [www.rallylicense.com](http://www.rallylicense.com). Licenses must be for 2025 and valid.

All registration requirements, such as team information, licenses, payments, insurance declarations, waivers, etc. must be completed online completely PRIOR to the event.

#### 4.1.1 Competitor Registration

Entry and payment must be paid via credit card online at [www.EnterRally.com](http://www.EnterRally.com). During registration, teams will need to specify a single email address to be used for all event communications. Complete the form for both driver and co-driver. Contact [ara@ara-rally.com](mailto:ara@ara-rally.com) for help with issues regarding the online entry process.

#### 4.1.2 Crew & Media Registration

Crew must be registered at <https://usacracing.redpodium.com/2025-ara-team-registration>. Please be sure to include email and phone contact for all members that will attend the event. **This must be completed by September 8<sup>th</sup>, 2025.**

Team media must register separately as media at <https://www.americanrallyassociation.org/media> and fill out the "Media Application" on the ARA Media page. Any questions please contact Marni Nagy at [Marni@ara-rally.com](mailto:Marni@ara-rally.com).

#### 4.2 Number of Entrants Accepted

The maximum number of entries will be forty (40). If more than forty (40) entries are received, a waitlist will be utilized with priority based on the receipt date and time of the entry and payment. The organizers reserve the right to allow more entries to the event.

#### 4.2.1 Organizer Rights

The organizers reserve the right to cancel the event if no more than fifteen (15) entries are received by the close of regular entry. In the event of a cancellation all entrants that have paid will be refunded in full. The organizers reserve the right to cancel the event due to extreme weather or any condition that threatens the safety of the event and its personnel.

#### 4.3 Entry Fee Schedule

|   |         |
|---|---------|
| Regular Entry Fee ( <i>Aug 4 - Aug 22</i> )   | \$1,000 |
| Late Entry Fee ( <i>Aug 22 - Sep 7</i> )      | \$1,300 |
| Oversize Service Spot                         | \$250   |
| RallySafe Rental Kits ( <i>Antenna Only</i> ) | \$40    |

Your entry fee will include one route book, one organizer provided pace notes book, one service location spot for the event, and one service crew packet.

#### 4.4 Withdrawal of Entry

Competitors may revise or withdraw their entry prior to the closing date by completing an entry update/withdrawal form available in the Registrar Folder on the Sportity App. Once entries close, withdrawals and entry revisions are carried out by filing an inquiry.

#### **4.5 Refund Policy**

Withdrawn entries will be refunded in accordance with ARA GCR 4.9.

- Prior to 23:59 on 08/24/2025 – full refund
- After 23:59 on 08/24/2025 and until 23:59 on 09/07/2025 – full refund less \$350.
- After 23:59 on 09/07/2025 – no refund.

If the event is canceled a full refund will be issued.

#### **4.6 Withdrawal During Competition**

Competitors who are withdrawing during the competition are required to complete and submit an ARA Rally Withdrawal Slip or inquiry to Scoring or an event official.

### **5. Insurance**

Third party liability insurance covering bodily injury and property damage, effective during the competition, will be provided by a policy secured by USAC and a Certificate of Insurance displayed on the Official Notice Board.

Competitors must have documentation showing Bodily Injury and Property Damage liability in amounts equal to or exceeding limits as stated in the current ARA rules for both the rally car and any service vehicles.

Competitors, service crew members and all event participants including officials, marshals, staff, stewards and all other volunteers who have obtained or signed an ARA waiver will be covered by a secondary ARA participant accident insurance policy which covers excess medical expenses to their primary medical insurance provider.

### **6. Event Sponsor Advertising**

The event MAY use the event sponsor advertising space allowed by the current ARA rules. Teams may refuse the rally sponsor's advertising by paying a \$1,000 fee at the time of entry. All ARA series advertising must be properly displayed on competition cars.

## 7. Fuel

### 7.1 Fuel Requirements

Competitors are required to supply/purchase their own fuel. All fuel must comply with the ARA fuel requirements.

Pump fuel is available 24 hours per day in the towns of Camp Verde, Cottonwood, and Chino Valley. Octane may vary from station to station; 93 octane is available at most stations.

### 7.2 Fueling Vehicles During the Event

Competitors must refuel in the designated refuel area or may use local gas stations for fueling outside of the designated area. The designated refuel area will be adjacent to the service park. Transit times include additional time for refueling.

A remote fueling location will be available in Chino Valley on Saturday. Any team that needs fuel delivered to the area must have their fuel cans delivered to the fuel station in Camp Verde prior to the completion of Parc Expose.

All fuel canisters must have competitor car numbers written on them and must be VENTED while in the fuel area. Failure to comply will result in a \$200 fine.

## 8. Reconnaissance

### 8.1 Recce Procedures.

Recce will start at 09:30 and will conclude at 17:30 for a total of 8 hours of recce. All competitors and vehicles must be off all stages at 17:30. Any competitor performing reconnaissance outside of the allowed hours will be subject to penalties defined in the RCR. Only registered competitors shall take part of recce unless additional passengers are approved by the competition director and submitted to the organizers prior to recce via the inquiry form. Recce will be done at the competitors own accord and is not mandatory but highly recommended.

No roads will be closed for recce, be aware of your surroundings. This area does have traffic including side by sides, dirt bikes, quads, and other vehicles. Two-way rally and public traffic should be expected.

The car number corresponding to your competitor number must be visible on the top driver side of the windshield of your recce vehicle. This will be distributed at registration. Vehicles failing to display their recce sticker will be considered a reconnaissance violation subject to RCR 1.2.1.

### 8.2 Recce Tracking

Competitors must use the RS Lite smartphone application developed by Status Awareness System (SAS) during their reconnaissance. It is the competitor's responsibility to have a smartphone with the latest version of the app installed. The RS Lite app must be running at all times a competitor is on the stage. Individual access codes will be distributed at check-in.

### **8.3 Acceptable Recce Vehicle**

Vehicles used for Recce must be normal street vehicles with no lettering or advertising which would call undue attention to the vehicle; exhaust must be quiet. No prepared rally cars will be allowed. The Clerk of the Course, or his designate, shall be the sole arbiter of the suitability of all recce vehicles.

## **9. Check-In / Registration**

Competitor check-in must be completed prior to the start of the event and at the scheduled times. Any late check-in must be coordinated through the Clerk of the Course. No in-person entry will be allowed at the event. Please refer to section 3 and 4 for references.

### **9.2 Competitor & Crew Check In**

Check in will be held at the Comfort Inn in Camp Verde. At check in all information submitted at registration will be confirmed. Competitors will be issued their wristbands and receive a packet containing Recce materials and instructions, Route Book, etc.

Service crew will check in with their competitors at the hotel conference room.

## **10. Scrutineering**

### **10.1 Scrutineering Location & Timetable**

Scrutineering will be by appointment only starting Thursday afternoon at 15:00. Competitors are responsible for contacting Kevin Mount at [KN6NZE@gmail.com](mailto:KN6NZE@gmail.com) by September 8, 2025 to schedule your appointment. Any team who has not scheduled an appointment will be assigned a time by the Chief Scrutineer. Scrutineering location will be announced in a bulletin a week prior to the event. Any questions or concerns regarding to scrutineering please contact Kevin Mount.

### **10.2 Preparation for Scrutineering**

All teams must have the following ready for Scrutineering.

- All competitors must present a Vehicle Logbook for the entered vehicle. Logbooks will not be issued at the event without prior arrangement. If you need a Logbook, contact Doug@ara-rally.com at least 14 days before the event.
- Driver and co-driver safety equipment and competition vehicles must comply with current ARA Rally Technical Rules.
- All event required stickers and identifiers must be present on the vehicle prior to scrutineering. Vinyl packages will only be available with prior agreement with the event register or the clerk of the course.

### **10.3 RallySafe**

This event will use RallySafe in accordance with [ARA Bulletin 2025-3](#). RallySafe units will be distributed at scrutineering. Fitting kits must be installed when entering scrutineering. Rental kits need to be ordered and paid for during online entry. Teams will not be allowed to leave scrutineering without verifying with staff the unit is working. Competitors will return the units and any rental kits during the final Parc Ferme. Visit <https://www.americanrallyassociation.org/rally-safe> for additional information.

## 10.4 Withdrawing and Restarting

All Competitors who are withdrawing from the competition or wanting to reenter the event as a NCE are required to complete the NCE-RAR-Withdraw form on Sportity. Competitors wanting to reenter on the next leg of the event must submit an inquiry. The Chief Scrutineer or his designee will verify that the vehicle and team meet the safety requirements and that any required tracking or monitoring device is functioning properly before issuing a timecard.

## 11. Service

### 11.1 Location & Time of Access

Service area location along with time of access will be released in a bulletin.

### 11.2 Service Spots Information

Service spots will be 20'x40'. All service spots will be numbered and assigned by the Chief of Service. Additional service spots are available for purchase for competitors needing additional room. If you need a larger service spot or request to service next to someone, please request by contacting Brian Macnamara the Chief of Service by email at [dmcattac@gmail.com](mailto:dmcattac@gmail.com) **no later than September 7<sup>th</sup>**.

### 11.3 Additional Service Area Information & Rules

**11.3.1 SERVICE AREA MUST BE LEFT CLEANER THEN FOUND.** Teams in violation of this rule will be subject to a fine of five hundred dollars (\$500).

**11.3.2** The speed limit in the service area is 15 MPH unless otherwise posted. Any vehicle operating in an unsafe manner will cause an assessment of penalties or fines to their competing vehicle, including up to removal from the event.

**11.3.3** Violations or infractions of event and site rules, or AZ Revised Statutes (A.R.S) committed by any member of a team will cause an assessment of penalties or fines to their competing vehicle, including up to removal from the event.

**11.3.4** All non-competition vehicles parked in the service area must have a placard displayed in the top right part windshield when in the service area. Placards must be visible from outside the vehicle and must have the team car number written on it. Vehicles not displaying this pass will not be allowed entry into the service area. All vehicles must fit within the assigned service spot.

**11.3.5** Any personnel found in restricted or closed areas will cause an assessment of penalties or fines to their competing vehicle, including up to removal from the event. Maps will be available in the advance information packet and included in the check-in packet.

**11.3.6** Service crews must notify the Chief of Service if they leave the service area to retrieve a broken competitor vehicle.

**11.3.7** No drugs or alcohol is permitted in the service area **at any time**.

**11.3.8** All pets must be on a leash at all times.

**11.3.9** All personnel in the service area must display their wristband at the entrance to the service area. If you need a new wristband, check in with the Chief of Service to sign the waiver again.

## **12. Practice, Testing**

The 2025 Prescott Rally will not offer a testing/practice stage. Practice or testing within a 100-mile radius of Prescott Rally stage roads of any nature is forbidden for a period of 90 days prior and 30 days following the Rally.

Teams found in violation will be barred from starting or excluded from finishing the 2025 Prescott Rally and entry fees will not be refunded. Event organizers shall be the arbiter of any potential violation. Participation in an event press/practice stage (if any) and / or even reconnaissance during their scheduled times is not considered a violation. Participation in a rallycross event at the Camp Verde Equestrian Center is not considered a violation.

## **13. Features of the Rally**

### **13.1 Camp Verde Super Special Stages**

On Saturday September 13th, a Super Special Stage will be held in the Camp Verde Equestrian Center for spectators. A bulletin with all rules, layout, special circumstances, and procedures will be posted fourteen (14) days prior to the start of the event.

### **13.2 Parc Expose**

Both Driver and/or Co-Driver must attend both days Parc Expose with their competition vehicle. All competitors must be in place 20 minutes prior to the published start time of Parc Expose.

### **13.3 Start of the Rally**

The Start Order will be published per the schedule on Friday morning and Friday evening for the following day's competition. The start order will be published on Sportity.

### **13.4 Running the Rally**

Official time is GPS time as displayed by RallySafe in the Mountain Standard Time Zone GMT or UTC -7. The official start of the event will be at the Parc Expose when the first car leaves MTC for each day. Note MTC controls (TC8A & TC15A) at the end of a leg allow competitors to arrive early per RCR 5.3.14

All control operations will be conducted per section 4 of the current ARA Rally Competition Rules and employ RallySafe consoles and tablets. Stage starts will be counted down by the RallySafe console and monitored by the start marshal regarding jump starts.

#### **13.4.1 Scoring**

This Event will be scored using RallySafe but will also use traditional timecards and timing methods.

#### **13.4.2 Wave In**

To help minimize the gap between cars, control workers may "wave you in" before your arrival minute at an ATC. per sections 4.1.7 of the RCR. You will still get at least three (3) minutes between checking in and starting. You will not receive a penalty for a wave in.



### **13.4.3 Transit Speeds**

Transit speed limit for this rally is governed by AZ Revised Statutes when operating on open public roadways. Once passed the closure signified by a "Road Closed" sign transit speed limits are set at 30 MPH. No exceptions. Speed Limit in the service area is 15 mph.

### **13.5 Finish of the Rally**

The finish of the rally is at MTC at the Prescott Rally Service Area.

Vehicles may be impounded at the end of the Rally on Friday and Saturday until released by officials. Any inspections and/or teardowns of any competing vehicles following the competition will be at the sole discretion of the Chief Scrutineer and ARA Steward, those selected will be given directions to the location.

### **13.6 Results & distribution**

Informational, Provisional, and Final scores will be posted on the Sportity app/website. Official Event Inquiries must be submitted online. The link is available on the Online Notice Board. Responses will be posted on the noticeboard.

## **14. Sanction Exemptions**

### **14.1 RCR Exemption #1 – Starting Interval**

Cars will run at 2-minute intervals. RCR 1.3

### **14.12.3 RCR Exemption #2 - Parc Fermé Rules**

Driver and codriver will be allowed to work on their vehicles within the staging area for the Witty Tom (SS3 & SS7) turn around. RCR 14.12.3

**Appendix # 1 – Event Itinerary**

**Appendix # 2 – Event Map**

2025 Prescott Rally

| TOTALS OF THE RALLY   |               |               |               |            |
|-----------------------|---------------|---------------|---------------|------------|
|                       | SS            | TRANSIT       | TOTAL         | %          |
| Leg 1 (Section 1, 2)  | 77.04         | 125.53        | 202.57        | 38%        |
| Leg 2 (Sections 3, 4) | 49.36         | 188.30        | 237.66        | 21%        |
| <b>Total -- 14 SS</b> | <b>126.40</b> | <b>313.83</b> | <b>440.23</b> | <b>29%</b> |

START Leg 1

Friday September 12, 2025

| TC          | LOCATION                     | SS DIST      | TRANSIT | TOTAL  | CONTROL     | LATENESS    | TRANSIT | TARGET | FIRST CAR    |
|-------------|------------------------------|--------------|---------|--------|-------------|-------------|---------|--------|--------------|
| 0           | <b>MTC OUT - Parc Expose</b> |              |         |        |             |             |         |        | <b>10:00</b> |
|             | distance to next refuel      | 38.52        | 62.83   | 101.35 |             |             |         |        |              |
| 1           |                              |              | 28.90   | 28.10  |             |             | 1:15    | 1:15   | 11:15        |
| <b>SS 1</b> | <b>Penske Pass</b>           | <b>11.58</b> |         |        | <b>0:03</b> | <b>0:16</b> |         |        | <b>11:18</b> |
| 2           |                              |              | 1.60    | 13.18  |             |             | 0:10    | 0:26   | 11:44        |
| <b>SS 2</b> | <b>Witty Tom</b>             | <b>7.68</b>  |         |        | <b>0:03</b> | <b>0:10</b> |         |        | <b>11:47</b> |
| T.A         | <i>Turn Around</i>           |              | 1.00    | 8.68   |             |             | 1:10    | 1:20   | 13:07        |
| <b>SS 3</b> | <b>Toms Witt</b>             | <b>7.68</b>  |         |        | <b>0:03</b> | <b>0:22</b> |         |        | <b>13:10</b> |
| 4           |                              |              | 1.63    | 9.31   |             |             | 0:10    | 0:10   | 13:20        |
| <b>SS 4</b> | <b>First View S</b>          | <b>11.58</b> |         |        | <b>0:03</b> | <b>0:16</b> |         |        | <b>13:23</b> |
| 4A          | REGROUP IN                   |              | 29.70   | 41.28  |             |             | 1:20    | 1:36   | 14:59        |
|             | REGROUP A                    |              |         |        |             |             | 0:20    | 0:20   |              |
| 4B          | REGROUP OUT/SERVICE IN       |              |         |        |             |             |         |        | 15:19        |
|             | <b>SERVICE A</b>             | 38.52        | 62.83   | 101.35 |             |             |         |        |              |
| 4C          | SERVICE OUT                  |              |         |        |             |             | 0:30    | 0:30   | 15:49        |
| <b>RZ</b>   | <b>REFUEL</b>                |              |         |        |             |             |         |        |              |
| 1           | distance to next refuel      | 38.52        | 62.70   | 101.22 |             |             |         |        |              |
| 5           |                              |              | 28.90   | 28.10  |             |             | 1:15    | 1:15   | 17:04        |
| <b>SS 5</b> | <b>Penske Pass</b>           | <b>11.58</b> |         |        | <b>0:03</b> | <b>0:16</b> |         |        | <b>17:07</b> |
| 6           |                              |              | 1.60    | 13.18  |             |             | 0:10    | 0:26   | 17:33        |
| <b>SS 6</b> | <b>Witty Tom</b>             | <b>7.68</b>  |         |        | <b>0:03</b> | <b>0:10</b> |         |        | <b>17:36</b> |
| T.A         | <i>Turn Around</i>           |              | 1.00    | 8.68   |             |             | 1:10    | 1:20   | 18:56        |
| <b>SS 7</b> | <b>Toms Witt</b>             | <b>7.68</b>  |         |        | <b>0:03</b> | <b>0:22</b> |         |        | <b>18:59</b> |
| 8           |                              |              | 1.50    | 9.18   |             |             | 0:10    | 0:32   | 19:31        |
| <b>SS 8</b> | <b>First View S</b>          | <b>11.58</b> |         |        | <b>0:03</b> | <b>0:16</b> |         |        | <b>19:34</b> |
| 8A          | <b>MTC IN</b>                |              | 29.70   | 41.28  |             |             | 1:20    | 1:36   | 21:10        |

Section 1

Section 2

|                     |       |        |        |
|---------------------|-------|--------|--------|
| <b>Leg 1 Totals</b> | 77.04 | 125.53 | 202.57 |
|---------------------|-------|--------|--------|

2025 Prescott Rally

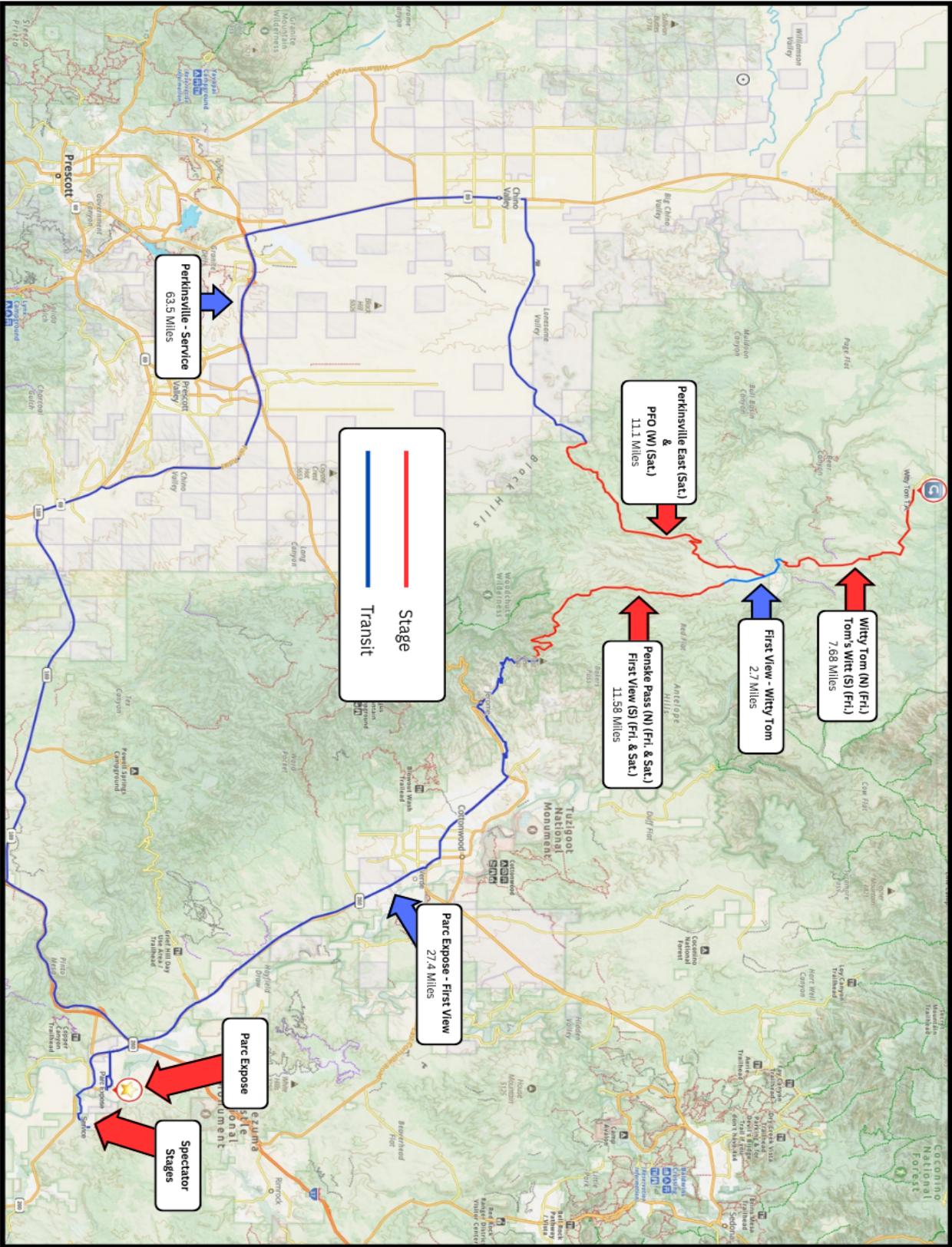
| START Leg 2  |   |       |        | Saturday September 13, 2025 |      |      |       |
|--------------|---|-------|--------|-----------------------------|------|------|-------|
| 8B           | MTC OUT (Parc Expose)                                     |       |        |                             |      |      | 10:00 |
|              | distance to next refuel                                   | 11.10 | 63.40  | 74.50                       |      |      |       |
| 9            |   |       | 63.20  | 63.20                       |      | 1:30 | 1:30  |
| SS 9         | PFO   | 11.10 |        |                             | 0:03 | 0:12 | 11:33 |
|              |   |       | 0.20   | 11.30                       |      |      |       |
| RZ           | REMOTE REFUEL - Perkinsville Intersection (Just South of) |       |        |                             |      |      |       |
| 2            | distance to next refuel                                   | 13.58 | 30.90  | 44.48                       |      |      |       |
| 10           |   |       | 0.20   | 11.30                       |      | 0:17 | 0:29  |
| SS 10        | First View S  | 11.58 |        |                             | 0:03 | 0:16 | 12:05 |
| 11           |   |       | 29.70  | 41.28                       |      | 1:15 | 1:31  |
| SS 11        | Verde Special   | 2.00  |        |                             | 0:03 | 0:05 | 13:39 |
| 11A          | REGROUP IN  |       | 1.00   | 3.00                        |      | 0:10 | 0:15  |
|              | REGROUP B   |       |        |                             |      | 0:10 | 0:10  |
| 11B          | REGROUP OUT/SERVICE IN                                    |       |        |                             |      |      | 14:04 |
|              | SERVICE B   | 24.68 | 94.10  | 118.78                      |      |      |       |
| 11C          | SERVICE OUT   |       |        |                             |      | 0:30 | 0:30  |
| RZ           | REFUEL  |       |        |                             |      |      |       |
| 3            | distance to next refuel                                   | 13.58 | 31.00  | 44.58                       |      |      |       |
| 12           |   |       | 1.00   | 1.00                        |      | 0:10 | 0:10  |
| SS 12        | HOLY Guacamole! Special                                   | 2.00  |        |                             | 0:03 | 0:05 | 14:47 |
| 13           |   |       | 29.80  | 31.80                       |      | 1:15 | 1:20  |
| SS 13        | Penske Pass   | 11.58 |        |                             | 0:03 | 0:16 | 16:10 |
|              |   |       | 0.20   |                             |      |      |       |
| RZ           | REMOTE REFUEL - Perkinsville Intersection (Just South of) |       |        |                             |      |      |       |
| 4            | distance to next refuel                                   | 11.10 | 63.40  | 74.50                       |      |      |       |
| 14           |   |       | 0.20   | 11.78                       |      | 0:17 | 0:33  |
| SS 14        | Perkinsville West   | 11.10 |        |                             | 0:03 | 0:12 | 16:13 |
| 14A          | MTC IN  |       | 63.20  | 74.30                       |      | 1:30 | 1:42  |
|              |   |       |        |                             |      | 1:42 | 17:55 |
| Leg 2 Totals |   | 49.36 | 188.30 | 237.66                      |      |      |       |

Section 3

Section 4

# 2025 Prescott Maps

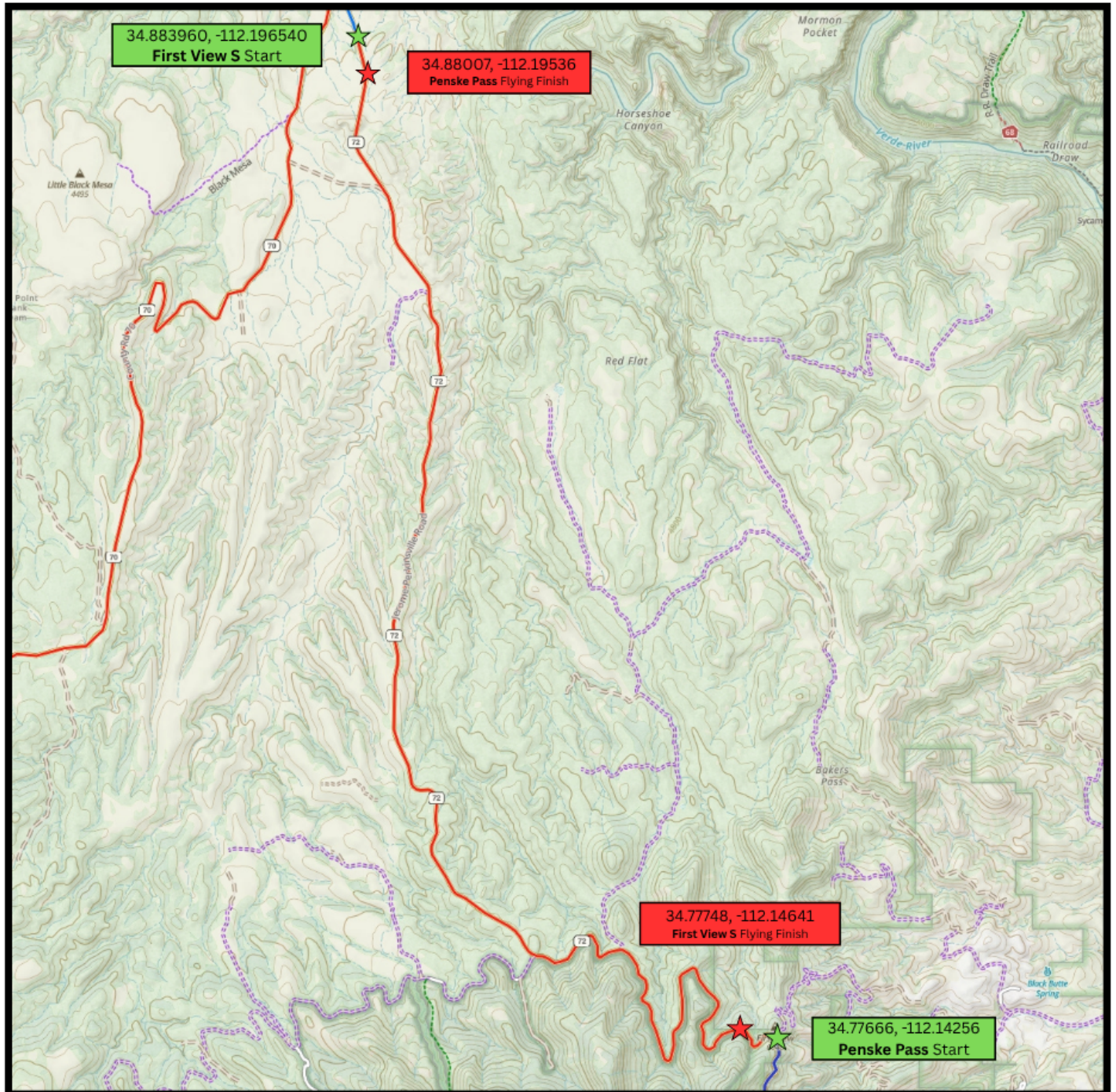
## Overall Map





# 2025 Prescott Maps

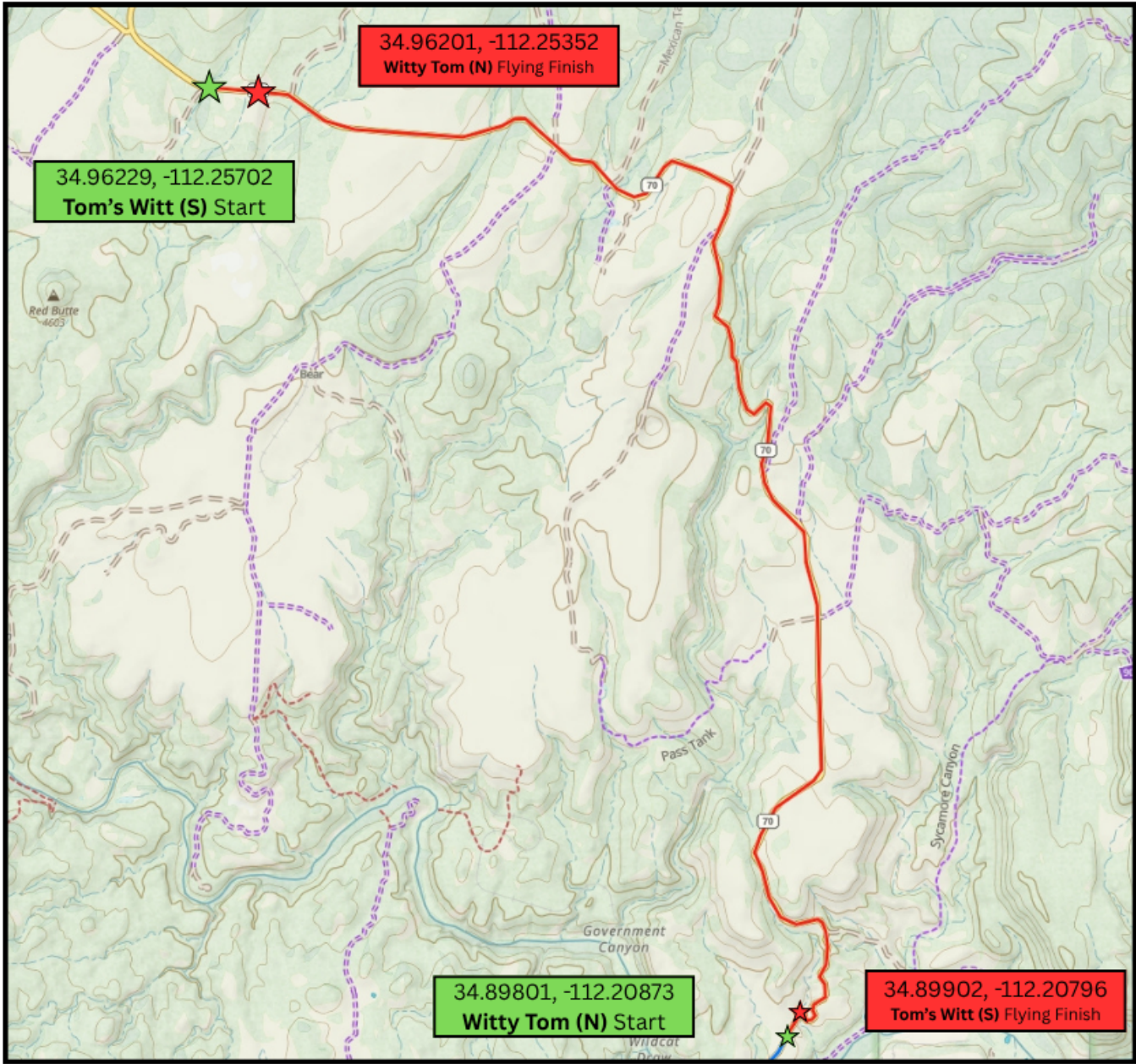
## Penske Pass / First View S





# 2025 Prescott Maps

## Witty Tom / Toms Witt





# 2025 Prescott Maps

## Perkinsville / PFO

